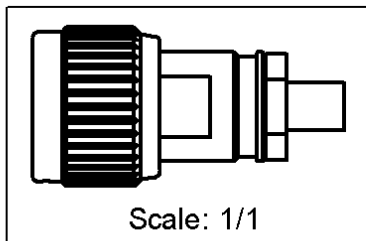
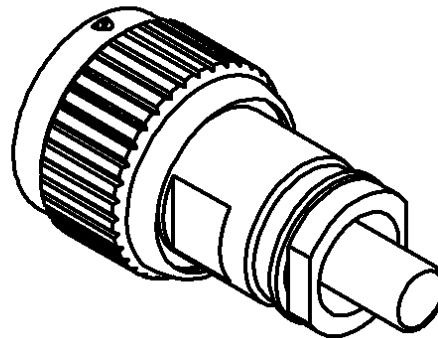
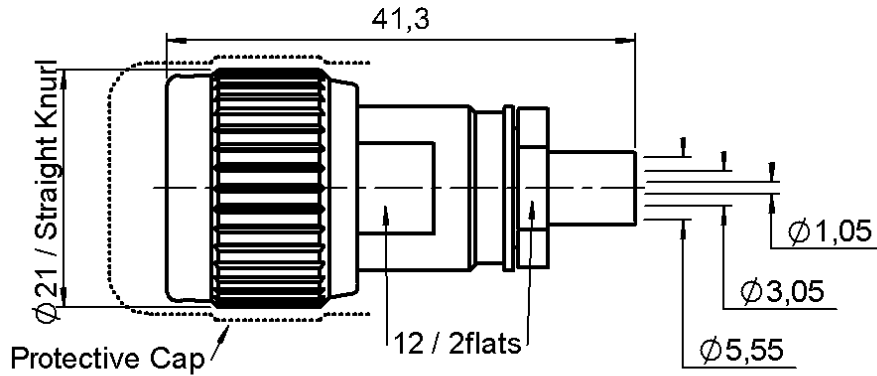


STRAIGHT PLUG CRIMP TYPE

R161.092.200

CABLE 5/50 D

Series : N



All dimensions are in mm.



COMPONENTS	MATERIALS	PLATINGS (µm)
BODY	BRASS	NICKEL 2
CENTER CONTACT	BRASS	GOLD 1.3 OVER NICKEL 2
OUTER CONTACT	BRASS	NICKEL 2
INSULATOR	PTFE	
GASKET	SILICONE RUBBER	
OTHERS PARTS	BRASS	NICKEL 2
-	-	-
-	-	-

Issue : 0708 F

In the effort to improve our products, we reserve the right to make changes judged to be necessary.



STRAIGHT PLUG CRIMP TYPE

R161.092.200

CABLE 5/50 D

Series : N

PACKAGING

Standard	Unit	Other
50	'W' option	Contact us

SPECIFICATION

ASNE0462-K -0693 1 00

CABLE ASSEMBLY

Stripping	a	b	c	d	e	f
mm	9,00	9,00	23,0	0,00	0,00	0,00

ELECTRICAL CHARACTERISTICS

Impedance	50	Ω
Frequency	0-3	GHz
VSWR	1.15 + 0,000	x F(GHz) Maxi
Insertion loss	0.048	$\sqrt{F(GHz)}$ dB Maxi
RF leakage	- (101)	- F(GHz)) dB mini
Voltage rating	850	Veff Maxi
Dielectric withstanding voltage	1500	Veff mini
Insulation resistance	5000	M Ω mini

Assembly instruction :

Recommended cable(s)

RG 142
RG 400
RG 223
KX 23
RG 142 FTX

Cable retention

- pull off **200** N mini
- torque **NA** N.cm

MECHANICAL CHARACTERISTICS

Center contact retention		
Axial force – Mating end	27	N mini
Axial force – Opposite end	27	N mini
Torque	NA	N.cm mini

TOOLING

Part Number	Description	Hexagon
.	.	.
R282.293.000	CRIMPING TOOL M22520/5-01	-
R282.235.011	CRIMPING DIES M22520/5-11	5.41
. Or - (ou)		
R282.223.000	CRIMPING TOOL	5.41
. And - (et)		
282.291	CRIMPING TOOL M22520/1-01	2x4 (pos. 7)
282.997	LOCATOR	rouge
.	.	.

Recommended torque		
Mating	130	N.cm
Panel nut	NA	N.cm
Clamp nut	370	N.cm
A/F clamp nut	12,0000	mm

Mating life	500	Cycles mini
Weight	37,4000	g

ENVIRONMENTAL

Operating temperature	-55/+155	$^{\circ}$ C
Hermetic seal	NA	Atm.cm3/s
Panel leakage	NA	

OTHERS CHARACTERISTICS

Issue : 0708 F

In the effort to improve our products, we reserve the right to make changes judged to be necessary.



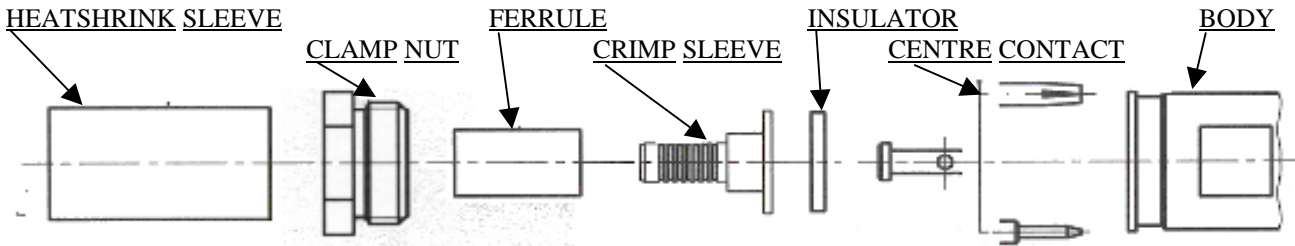
STRAIGHT PLUG CRIMP TYPE

R161.092.200

CABLE 5/50 D

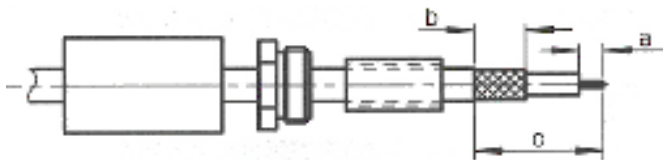
Series : N

COMPONENTS



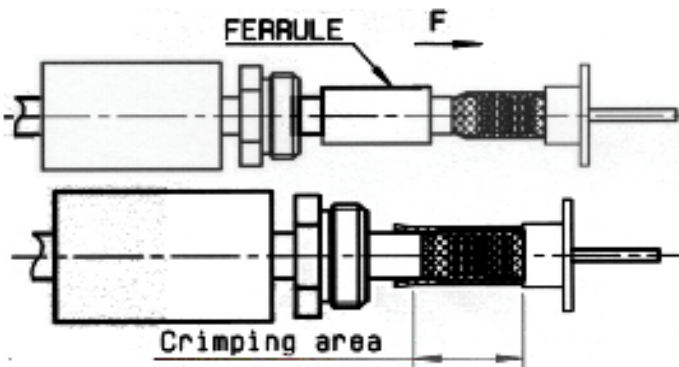
1

Slide onto the cable the heatshrink and the ferrule.
Strip the cable.



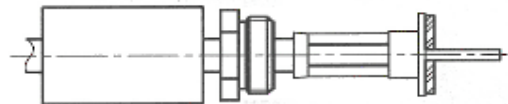
2

Slide the clamp nut onto the crimp sleeve.
Slide sub-assembly under the braid.
Slide ferrule over the braid against clamp nut. (In direction F)
Crimp the ferrule with crimping tool + dies.



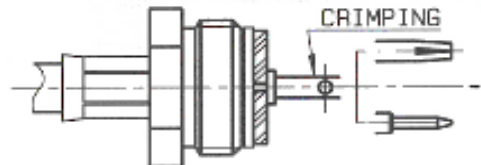
3

Cut the dielectric flush to crimp sleeve.
Mount insulator against crimp sleeve.



4

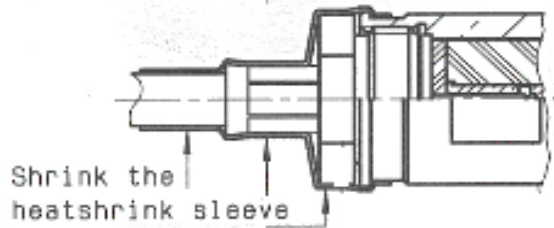
Slide the centre contact onto the cable inner conductor against insulator.
Crimp centre contact with crimping tool and positioner.



heatshrink sleeve not shown

5

Screw sub-assembly into the connector body.
(recommended coupling see connector TDS)
Slide sleeve over ferrule and Heatshrink sleeve in place.



Shrink the heatshrink sleeve

Issue : 0708 F

In the effort to improve our products, we reserve the right to make changes judged to be necessary.

